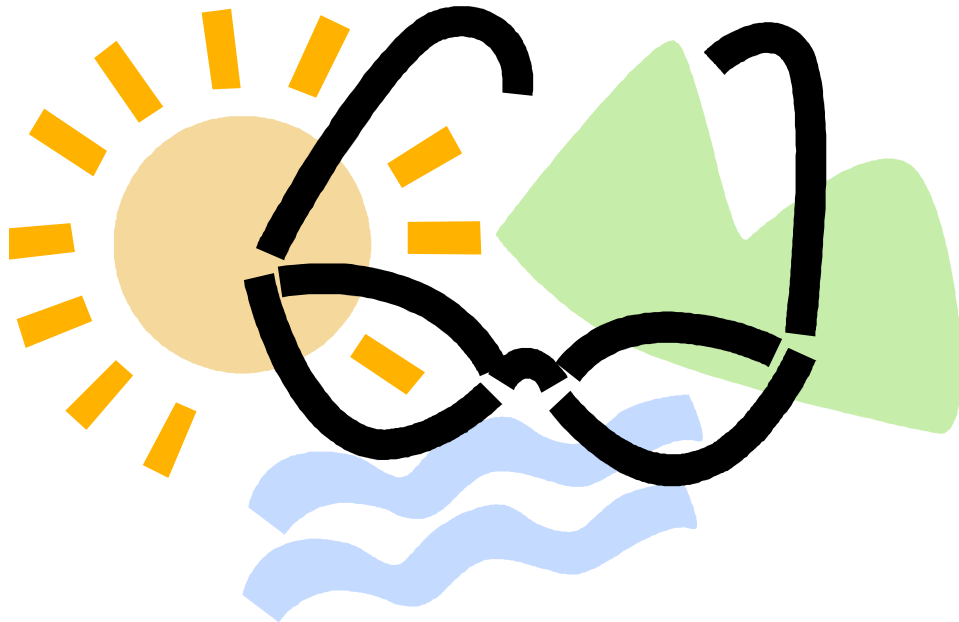
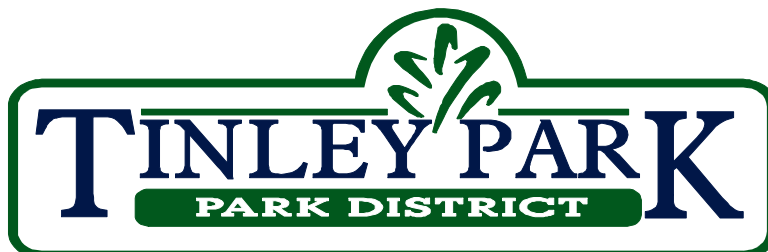


TINLEY PARK-PARK DISTRICT PARENT/TEEN HANDBOOK



TEEN SUMMER CAMP 2010

Bettenhausen Recreation Center
8125 West 171st Street, Tinley Park, Illinois, 60477
(708) 342-4200
www.tinleyparkdistrict.org



MISSION STATEMENT

The Tinley Park-Park District is committed to creative recreational programming opportunities and outstanding customer service while providing and maintaining quality recreational facilities and parks to enhance the quality of life in Tinley Park.

Welcome to the Tinley Park-Park District Summer Camp Program. Your child is about to begin a program that will be both exciting and educational. Most of all, our program is designed for fun. The following handbook of information may help to answer the numerous questions you may have regarding our program. Please read this information and cooperate with us by following the policies and procedures of our program. Please keep this handbook to refer to throughout the summer. Periodically, additional information may be sent during camp.

Please feel free to call if you have a question concerning Teen Camp. We're looking forward to a safe and enjoyable summer.

Sincerely,

The Tinley Park-Park District Camp Staff

Table of Contents:

General Information	Page 3
Camper Expectations & Discipline Procedures	Page 4
Release Procedure & Sign-Out	Page 4-5
Teen Camp Rules & Regulations	Page 5
Dress Code	Page 5
Swim Days	Page 6
Medications	Page 6
Health & Safety	Page 6
Behavior Contract	Page 7
McCarthy Park Permission Form	Page 8
Swimming/Field Trip Permission Form	Page 9

GENERAL INFORMATION

Philosophy

It is our hope that the Tinley Park-Park District Camp will offer a program that will provide each camper with the opportunity to:

1. Learn how to work and play as a member of a group without sacrificing his/her individuality.
2. Develop healthy habits, a sense of fair play, and a respect for equipment and property.
3. Develop an appreciation of nature and its beauty.
4. Participate in wholesome and creative play in a setting which will insure the health and safety of the camper.

About the Staff

A highly qualified and experienced adult director supervises each camp. Counselors at each camp are a mixture of mature and enthusiastic adults, college and high school students. All camp staff are put through an extensive camp training program which includes such varied topics as supervision and safety techniques to curriculum development and first aid. We are proud of our staff and know that you will feel the same.

Emergency/Information Form

The Emergency/Information form will be completed at the time of registration. If at any time you wish to update this form, please see your Site Director. Your child's camp counselor and Site Director will have this form on them at all times while camp is in session.

Questionnaire/Evaluation

Upon completion of camp, you will receive a camp questionnaire, please take a few moments to fill it out and send it in! With your help, we hope to make camp even more fun next year.

T-shirts & Tote Bags

The Park District will provide each camper with a T-shirt. Camp T-shirts will be handed out on the first day of Teen Camp. They must wear their T-shirts when attending field trips. Tote bags will be available for purchase at the Park District Office for \$7.

Clothing

Camper should wear jeans or shorts, camp and other T-shirts, socks and tennis shoes. We ask that the campers refrain from wearing good clothes to camp, as it may hinder their participation in some activities or damage their clothes. Gym shoes must be worn at all times. It is also suggested that your child wear a cap or hat for protection against the sun. Please label all of the items that your camper brings to camp.

Lost & Found

Please encourage your child to keep track of his or her belongings. The park district and its counselors will not be held responsible for lost or stolen items. At each campsite there will be a lost and found area where all belongings left at the site will be placed in a box. If your child should lose any belongings, please feel free to look through the Lost & Found Box. At the end of each camp session, all lost articles will be placed in the administration office for one week.

Sunscreen

It is recommended that your child bring/wear sunscreen to/at camp each day. Sunscreen may not be shared except by siblings.

Camp Discipline

In order to provide a safe and effective day camp program for your child, certain rules have been established and MUST be followed. Disciplinary action will be taken if rules are ignored by informing parents with phone calls and a letter of any infractions that may occur by their child. After two warnings, the camper will have the choice of abiding by the rules or dismissal. Campers should adhere to the following:

- All campers will listen to and follow any directives/instructions that are given by a Day Camp Counselor, Director or Supervisor.
- Campers will respect their Counselors and Supervisors, as well as their fellow campers.
- Campers will demonstrate good sportsmanship while participating in any activity.
- Campers are to inform a staff member when being disturbed or taunted by other campers.
- Fighting, the use of offensive language, or any other demonstration of inappropriate behavior will not be tolerated under any circumstances.
- Campers who bring weapons, alcohol, drugs or other illegal items (i.e. fireworks) to camp will be immediately dismissed from camp and the police will be notified.
- All personal electronic equipment should be left at home unless the camper has camp staff written permission to bring such items from home this includes, but it is not limited to radios, walkmans, Gameboys, hand-held games, trading cards etc.
- Campers shall not bring any animals, toy weapons or personal sports equipment from home unless they have written permission from camp staff.

Release Procedure Sign-Out

SIGN OUT IS REQUIRED at the end of EACH day, unless written permission is given to the camp counselors/Recreation Supervisor to release campers at 3:00pm. The camper must sign out with a counselor before leaving. Teen Camp pick-up/drop-off will be at the Pit Stop inside the Tony Bettenhausen Recreation Center. If your camper will not be at camp, you must call 708-342-4213 and inform the Recreation Supervisor before 8:45am.

Your child will not be allowed to leave camp with anyone not listed on the Emergency Information Form. All information is kept confidential.

If your child will be arriving to camp late or departing early please inform the Camp Director/Recreation Supervisor by a written letter and arrangements will be set with the teen camp staff. If someone else will be picking up your child, please inform the Camp Director in

a written letter (name must appear on Emergency/Information Form). They will then note this in the sign-out book. If you need to speak with a counselor, please wait until the entire group has been dismissed.

Teen Camp Rules and Regulation:

- ☼ Campers are expected to be at camp from 9a.m. to 3p.m. every camp day.
- ☼ If a camper is to be late or leave early, a phone call to the park district is required- NOTES ARE NOT ACCEPTED.
- ☼ All campers must sign out with a counselor before leaving.
- ☼ CELL PHONES ARE NOT ALLOWED DURING CAMP HOURS. While we understand that cell phones are a necessity, they are not allowed to be on or out during camp hours. If a camper is caught with a cell phone, it will be confiscated and given back when the parents pick the child up.
- ☼ Please bring drinks for lunch time; campers will be allowed to purchase drinks from the pop machines in the Recreation Center during camp hours, however we can not guarantee vending machines will be working/available.
- ☼ ENERGY DRINKS ARE NOT ALLOWED AT CAMP
- ☼ The game room is only available when given special permission by the counselors.
- ☼ Campers will only be allowed in the skate park if they have their own skate boards or roller blades. Campers must adhere to all skate park rules.
- ☼ MP3, CD, other music devices and hand held game systems are not allowed during regular camp days, but may be brought for bus rides. However, it is at the camper's risk. Staff is not responsible for lost or stolen players. It is recommended to leave these items at home.
- ☼ Money should only be brought to camp on special days such as field trips, Wednesdays for snacks at the pool, Thursdays for McCarthy Park, Fridays for field trips(if necessary) or when the staff sends a note home suggesting money.
- ☼ During bus rides to field trips, the campers will be seated at the staff's discretion.
- ☼ THE PARK DISTRICT IS NOT RESPONSIBLE FOR ANY LOST OR STOLEN GOODS.

Dress Code:

- ☼ Shorts need to be fingertip length.
 - ☼ No holes above the mid-thigh.
 - ☼ All tank tops need to have thick straps. Spaghetti straps, tube tops, and halters will not be allowed in camp.
 - ☼ All apparel may not have inappropriate language, graphics or advertisements on them.
 - ☼ Camp shirts must be worn on ALL field trips!
- *We reserve the right to send any camper home to change if not appropriately dressed*

Swim Days:

- ☼ ALL TEENS WILL FOLLOW THE WATER PARK RULES. Any teen breaking the water park rules will be sitting out the rest of the day, and parents will be notified.
- ☼ Teens swimming on swim days must wear bathing suits. Boys swim trunks must have a liner—boxers with board shorts are not allowed. Girls must have bathing suits on and are not allowed to just swim in clothes. They may keep clothes on over their bathing suits if they wish when not swimming.
- ☼ Goggles are allowed if they only cover the eyes. Goggles with face masks are not permitted.

☀ Floaties, inner tubes, and noodles are not permitted. Diving toys and squishy balls are allowed in the park.

☀ No outside food or drink is allowed in the park. If campers want snacks from the concession stand, they must bring money for it.

Medications

If possible we encourage giving your child their medication prior to camp. If your child needs to take medication during the camp day, we can be sure that your child self-medicates at the proper time. The staff is not able to dispense medication to a camper. In order for medications to be administered, we must receive a completed medical permission form, which is available at the Park District Office before camp begins. The medication must be delivered to the Camp Director **EACH DAY.**

Health & Safety

If your child is ill or has a fever, we discourage their participation. Please do not send a camper who has any of the following the morning of camp: fever, diarrhea, vomiting, runny nose, pink eye, etc. If we are made aware of a contagious disease that was brought to camp, we will notify you as soon as possible such as chicken pox, strep throat, lice or pink eye, we will respect your confidentiality in reporting the illness. Please keep in mind, a signed doctor's note will be required for a camper to return to camp if they were out due to a contagious disease/illness.

If a child becomes ill during camp, a parent will be notified and asked to pick up the child. If a parent is unavailable, the emergency contact will be called. At the end of the camp day, you will be notified via Recreation Supervisor, Camp Director, Counselor or in writing of any medical problems that occurred at camp such as cut, bruise, sprain, etc.

We are working to provide a safe, entertaining, and educational summer for your child. We are confident that you will be pleased with our program, but should you have any questions or concerns regarding Teen Camp, please feel free to call us at 342-4200. You may also stop in before or after camp to speak with the counselors, Camp Directors or Recreation Supervisor!

BEHAVIOR CONTRACT

At the Teen Camp, we practice the *three strikes and you're out policy*. If a camper breaks a rule the first time they will get a warning. If behavior continues, a time-out will be used. Continued disruptive behavior will result in lose of privileges (up to and including swim days or field trips), and the parents will be notified. If the camper continues to break the rules, the campers will be required to meet with camp staff and parents to discuss the behaviors. These rules will strictly be enforced to guarantee each teen has a fun, interactive, positive environment where they feel free to experience new things and make life long friends.

I fully understand these rules and understand the consequences of my actions should I break one.

X _____
Camper Signature

Date _____

X _____
Parent Signature

Date _____

Tinley Park Teen Camp
McCarthy Park Permission Slip

The Teen Camp will be walking to McCarthy Park every Thursday of camp. The campers are allowed to bring with them skateboards or rollerblades for the skate park, money for batting cage tokens and food, and any sports equipment they wish. Campers will enter the skate park and batting cages AT THEIR OWN RISK.

I give my permission for my son/daughter, _____ to walk to McCarthy Park every week with the Teen Camp. I understand that entering the skate park or batting cages poses a potential risk for injury.

X _____
Parent Signature

Date _____

Tinley Park-Park District Summer Teen Camp 2010 Swimming/Field Trip Permission Slip

The following is a general permission slip for Swim Days and Field Trips. By filling out this form, you give your child permission to attend the swim days and field trips. Additional information regarding the field trip will be in the weekly newsletter. By completing this form, you also give permission to Tinley Park-Park District staff to transport campers to and from the pool and field trip destinations.

DESTINATION

White Water Canyon Water Park

Swim Time: 11:30 a.m.-2:45 p.m.

The Tinley Park-Park District Summer Camp will swim when weather is favorable on Wednesday. We will not swim if staffing numbers fall below minimum requirements for swimming or if the Water Park Staff deem swimming conditions unsafe.

Field Trips

The Tinley Park-Park District will host 1 field trip for the Camp each week. We will only attend these field trips if weather and staffing conditions allow for a safe time. Travel will be provided on school buses or other approved vehicles. More detailed information about our field trips will be available at the start of summer camp in the weekly newsletters. Some trips might have early drop-off or late pick-ups. You will be notified of any deviation from the regular camp time.

Camper Name: _____

Camper Name: _____

Main Contact in case of Emergency: _____ Phone: _____

I, the undersigned, assume all responsibility for risks and hazards incidental to participation in the Tinley Park- Park District Camp Swim Days and Field Trip Days.

I assume all responsibility for the behavior of my child and grant the Tinley Park-Park District personnel permission to discipline my child for any misbehavior.

I do not hold the Tinley Park-Park District and personnel responsible for any injuries or accidents of any kind, or loss of personal property.

I grant permission to the trip director to authorize and obtain medical care in case of emergency when neither parent nor guardian can be contacted to grant authorization for emergency treatment.

Signature of Parent/Guardian

Date